



**KWAZULU-NATAL PROVINCE**

TRANSPORT  
REPUBLIC OF SOUTH AFRICA

**DIRECTORATE: RD LADYSMITH**

Private Bag X 9911, LADYSMITH, 3370  
12 Hyde Road, Ladysmith, 3370

Bongani.Magwaza@kzntransport.gov.za

Tel: 036 638 4400 Fax: 036 6384465

**BRIEFING NOTES FOR BLACKTOP PATCHING ON MAIN ROAD P28**

Pay careful attention to page T4, T1.1 Tender notice and invitation to tender as the most important information is highlighted there. Note that and electronic AND hard copy must be submitted as requested in the tender notice.

Pay special attention to all pages that contain this heading –

Failure to complete, sign and date this form or failure to acknowledge receipt of each addendum issued or failure to return with the quotation submission a complete copy of each Addendum issued shall result in the quotation being considered non-responsive in terms of subclause C.3.8 of the Conditions of Tender and such a quotation shall be rejected. If this heading is displayed and a contractor feels that it is N/A and does not sign the page, the tender will be non-responsive. The content may be marked as N/A if so applicable as is generally the case with Page T13 but the Bidder must sign and date the required spaces as instructed. Please note initialing the bottom of the page is not seen as a signature it is simply acknowledging that the bidder has seen the page and is aware of what is in his/her document.

Page T16 must be completed in full. Pay special attention to the highlighted sections -

SUPPLIER COMPLIANCE STATUS	TAX COMPLIANCE SYSTEM PIN:		OR	CENTRAL SUPPLIER DATABASE NO:	MAAA
B-BBEE STATUS LEVEL VERIFICATION CERTIFICATE	TICK APPLICABLE BOX]		B-BBEE STATUS LEVEL SWORN AFFIDAVIT	TICK APPLICABLE BOX]	
	<input type="checkbox"/> Yes <input type="checkbox"/> No			<input type="checkbox"/> Yes <input type="checkbox"/> No	
<b>[A B-BBEE STATUS LEVEL VERIFICATION CERTIFICATE/ SWORN AFFIDAVIT (FOR EME &amp; QSE) MUST BE SUBMITTED IN ORDER TO QUALIFY FOR PREFERENCE POINTS FOR B-BBEE]</b>					
ARE YOU THE ACCREDITED REPRESENTATIVE IN SOUTH AFRICA FOR THE GOODS /SERVICES /WORKS OFFERED?	<input type="checkbox"/> Yes <input type="checkbox"/> No <small>(IF YES ENCLOSE PROOF)</small>		ARE YOU A FOREIGN BASED SUPPLIER FOR THE GOODS /SERVICES /WORKS OFFERED?	<input type="checkbox"/> Yes <input type="checkbox"/> No <small>(IF YES, ANSWER THE QUESTIONNAIRE BELOW)</small>	

Are you a foreign based supplier – This answer should generally be **No** and the bottom section (QUESTIONNAIRE TO BIDDING FOREIGN SUPPLIERS) does not need to be completed as the contractor has already indicated that he is not a foreign based supplier.

T16 must be completed and signed thus accepting the terms for bidding.

SBD4, 8 and 9 are extremely important and failing to answer all the questions required also lead to a bidder’s offer being seen as non-responsive. This has occurred on numerous occasions.

SBD61. Note 6.1 must be completed to claim BBBEE Points. It should be completed as follows:  
B-BBEE Status Level of Contributor: 1 (As the BBBEE level the bidder’s certificate or affidavit grants)  
= ...20 (Correlating points to level – see table 4.1) (maximum of 20 points)

SBD 6.2 is applicable to this Contract the annexures must be complete in full.



## KWAZULU-NATAL PROVINCE

TRANSPORT  
REPUBLIC OF SOUTH AFRICA

Returnable D – T26 – Generally the simplest and most frequent submission in a Sworn Affidavit. It should be noted that an affidavit must be original that is certified by a commissioner of oaths. If a copy is submitted the contractor will not be awarded any preferential points and therefore lose out on 20 points. On the Affidavit one question is regarding the financial year for which the affidavit is done. This must be the latest financial year and not older than 12 months from the date of closing of the bid, but also this time cannot be in the future, e.g. February 2022. All provisions for disclosing information under Oath must be complied with to ensure the affidavit is acceptable. For BBBEE certificate – these must be submitted as a copy – no need of certification.

Returnable F – T41 must be completed and signed by all members/directors. If one of the members/directors fails to sign it is seen as non-responsive document due to the directors/members not being aware of the tender submission. Also ensure that the specimen signature does appear on the resolution letter of the company owners attached to this returnable.

Returnable G – T42 must be completed and have CV's attached as is indicated at the top of the Page. H2 is Not applicable and it is not necessary to complete this section.

Returnable J – T47 must be signed, dated and completed as indicated on the bottom of page T47. Please follow the instructions on page T48 on how to calculate the minimum labour percentage and note that the specified minimum labour percentage is 14.93% as indicated. While tendering below the minimum is no longer a disqualification criteria, a penalty would apply to the bid if awarded for not achieving the minimum target.

Returnable K – T48 must be completed correctly and signed. This should be read and completed accordingly. Question 3 has three sub headings. Generally, the contractor will answer yes to one of these. The corresponding number in question 4 must then also be completed. Example – If 3(a) is answered yes then the contractor must answer 4(a) as well, If 3(b) then 4(b) etc. etc.

Page C3 as the form of offer must be signed and the amount in words must be completed failure to do this will invalidate the tender.

Please check that the amount on C3 (Form of Offer) and C37 (BOQ Summary) match.

On a contractual note the following must be mentioned:

The construction period is 04 Months and failure to complete within the specified timeframe will result in penalties. It is of extreme importance that these risks be factored into the pricing of documents as the bidder's price is also compared to realistic market value of the works that has been assessed by a third party to guide if the quoted price is reasonable.



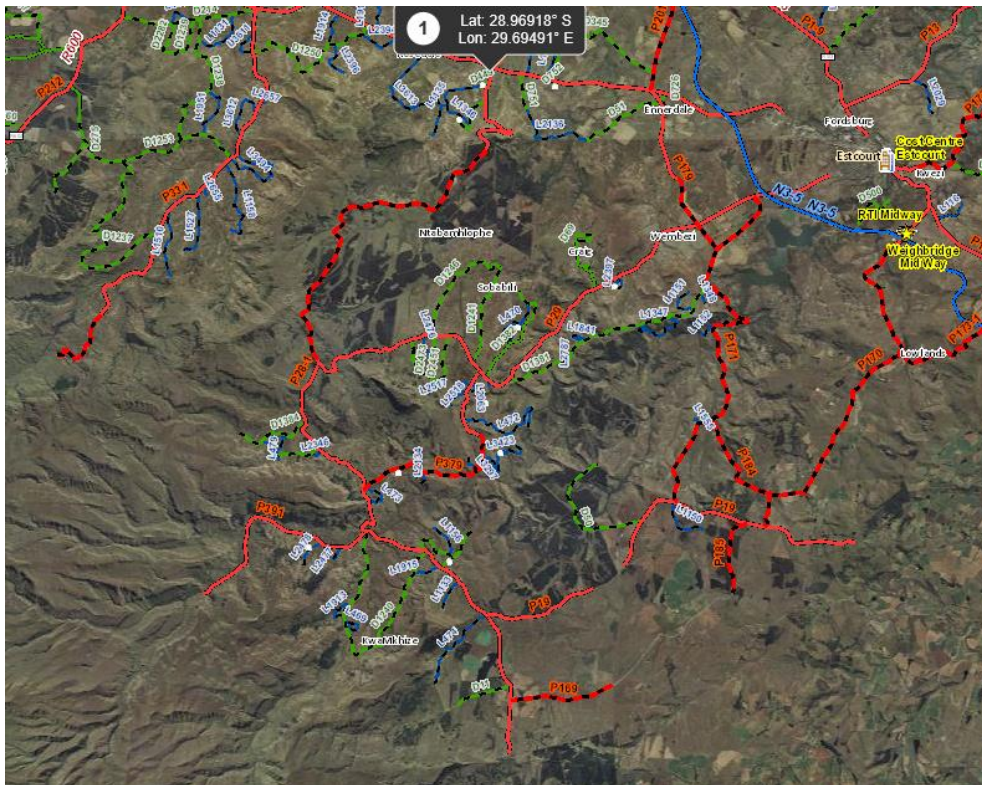
**KWAZULU-NATAL PROVINCE**

**TRANSPORT**  
REPUBLIC OF SOUTH AFRICA

**C4.1 LOCALITY PLAN**

Main road P28 is located in KZ No. 237 within DC 23, where the start of the project is coming on P10-1.

**Figure C4.1 – Locality Plan of P28**



The approximate limits of construction can be seen in **Table C4.1**

**Table C4.1 – Approximate project limit of construction co-ordinates**

<b>KM</b>	<b>LATITUDE</b>	<b>LONGITUDE</b>
P28(Chainage from km28.5 to km 42 )	28.96918°S	29.69491° E

**PROJECT BACKGROUND**

Main road P28 is in Estcourt on ward 6, along the road there is Zimele Primary School and Madiba Clinic. P28 is a flat terrain with a lot of potholes in some of other sections of the road. Hot mix plant for asphaltting is located at Estcourt CBD and also G2 material.